

# z/OS Installation Strategy

Marna WALLE, [mwalle@us.ibm.com](mailto:mwalle@us.ibm.com)

Member of the IBM Academy of Technology  
z/OS System Installation  
IBM Z Systems, Poughkeepsie, NY, USA



November 2018

Session **BE**

Thanks to John Eells  
for this material!



# Disclaimer

**IBM's statements regarding its plans, directions, and intent are subject to change or withdrawal without notice at IBM's sole discretion. Information regarding potential future products is intended to outline our general product direction and it should not be relied on in making a purchasing decision. The information mentioned regarding potential future products is not a commitment, promise, or legal obligation to deliver any material, code or functionality. Information about potential future products may not be incorporated into any contract. The development, release, and timing of any future features or functionality described for our products remains at our sole discretion.**

# What does “Installation” Mean?

- Everyone seems to “know what it means,” but when asked, they might say:
  - Load the product code into data sets and file systems
  - Load the product code and get the address spaces started
  - Load the product code, get the address spaces started, and run the IVPs (if supplied)
  - ...and so on
- What we mean for this presentation:

**Installation** means the entire set of tasks you need to do, starting with when you get your product order from the vendor and ending when the products are ready to use in a production environment.



# Where We Are Today

# Product Ordering Complications

- As anyone can see on Shopz...
  - IBM offers a number of package selections to be considered before you can choose a product:
  - **Two** options in most places:
    - ServerPac
    - CBPDO
    - (Standalone products have been eliminated.
  - **Up to six five** options in parts of Europe
    - Those above, plus:
      - SystemPac
      - FunctionPac
      - ProductPac



Shopz > Product catalog >

## Product catalog

Catalog view (Products in this view: 0)

Country/Region

Switzerland

Package type

Select one

Select one

KVM for IBM z - Standalone products and fixes

Linux on z - Standalone products and fixes

z/OS - CBPDO (products)

z/OS - ServerPac (system, subsystem, or products)

z/OS - ProductPac (customized products)

z/OS - FunctionPac (customized function replacement)

z/OS - SystemPac (customized system replacement)

~~z/OS - Standalone products and fixes~~

z/VM - VM SDO version 6

z/VM - Standalone products and fixes

z/VSE - VSE SIPO version 5

z/VSE - VSE SIPO version 6

➤ This is part of the problem...





# Where We Want to Be\*

\* All statements regarding IBM future direction and intent are subject to change or withdrawal without notice, and represent goals and objectives only.

---

# Shopz\*

- We need to get to a single method of product delivery, and then tune it as necessary
- No “packages” to select for z/OS products
- Just pick the products you want
- A package is created with those products in it
- You can select products in:
  - SMP/E format
  - Non-SMP/E format
  - A mix of SMP/E and non-SMP/E formats



## Product catalog

Catalog view (Products in this view: 0)

Country/Region

Package type

Show catalog

- z/OS Products
- z/VM - VM SDO version 6
- z/VM - Standalone products and fixes
- z/VSE - VSE SIPO version 5
- z/VSE - VSE SIPO version 6

Fast acc

IBM Customers



\* All statements regarding IBM future direction and intent are subject to change or withdrawal without notice, and represent goals and objectives only.

# z/OSMF\*

- In z/OSMF Software Management:
  - ✓ Add portable remote software instance and download it
  - ✓ Use the “Deployments” function to install it
  - Deployments drive workflows for system and product setup tasks

Welcome x

Software Manage... x

## Software Management

Use this task to view details about your software inventory, including related products, features, FMIDs, data sets, deployments, and SYSMODs. [Learn more...](#)

<a href="#">Software Instances</a>	Define your software to z/OSMF; deploy software; generate reports about your software.
<a href="#">Portable Software Instances</a>	Define your portable software instances to z/OSMF.
<a href="#">Products</a>	View a consolidated list of the products included in each software instance.
<a href="#">Deployments</a>	Deploy a software instance, and manage existing deployments.
<a href="#">Categories</a>	Create new categories for your software instances and deployments, and manage existing categories.
<a href="#">Settings</a>	Select the time zone in which to display date and time data. Indicate whether to display or suppress information messages.

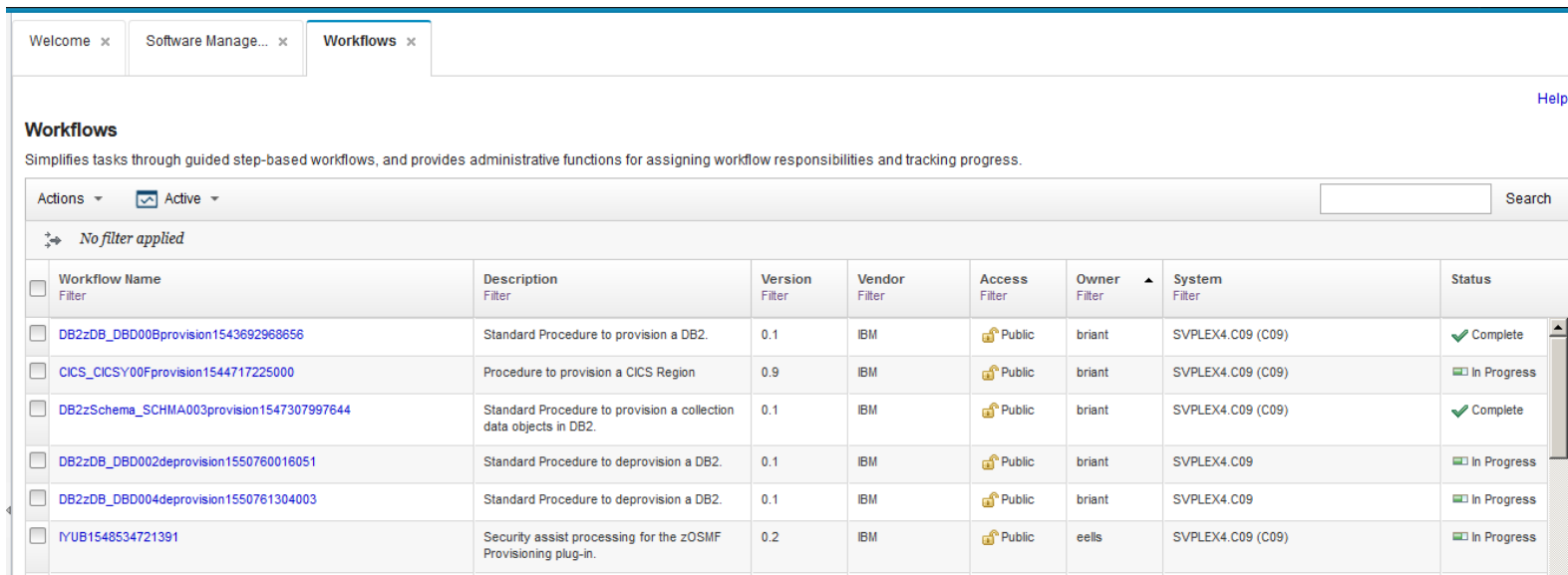


\* All statements regarding IBM future direction and intent are subject to change or withdrawal without notice, and represent goals and objectives only.



# z/OSMF\*

- In Software Management (continued):
- The workflows can be re-driven for every Deployment operation, local or remote, so:
  - They are automatically re-tailored for every environment
  - No need to bring forward and edit ServerPac-supplied setup jobs for this and for that
  - No need to keep a checklist for the things the workflows do



The screenshot shows the 'Workflows' section of the z/OSMF interface. It includes a search bar and a table of workflow tasks. The table has columns for Workflow Name, Description, Version, Vendor, Access, Owner, System, and Status. The status column shows icons for 'Complete' (green checkmark) and 'In Progress' (green progress bar).

Workflow Name	Description	Version	Vendor	Access	Owner	System	Status
DB2zDB_DBD00Bprovision1543692968656	Standard Procedure to provision a DB2.	0.1	IBM	Public	briant	SVPLEX4.C09 (C09)	Complete
CICS_CICSY00Fprovision1544717225000	Procedure to provision a CICS Region	0.9	IBM	Public	briant	SVPLEX4.C09 (C09)	In Progress
DB2zSchema_SCHEMA003provision1547307997644	Standard Procedure to provision a collection data objects in DB2.	0.1	IBM	Public	briant	SVPLEX4.C09 (C09)	Complete
DB2zDB_DBD002deprovision1550760016051	Standard Procedure to deprovision a DB2.	0.1	IBM	Public	briant	SVPLEX4.C09	In Progress
DB2zDB_DBD004deprovision1550761304003	Standard Procedure to deprovision a DB2.	0.1	IBM	Public	briant	SVPLEX4.C09	In Progress
IYUB1548534721391	Security assist processing for the zOSMF Provisioning plug-in.	0.2	IBM	Public	eells	SVPLEX4.C09 (C09)	In Progress



\* All statements regarding IBM future direction and intent are subject to change or withdrawal without notice, and represent goals and objectives only.

# Getting from Here to There\*



\* All statements regarding IBM future direction and intent are subject to change or withdrawal without notice, and represent goals and objectives only.

# Where to start?\*

- ServerPac is closest to what we want
- We must preserve its good attributes
- Some things are done but we have more to do to make it “the” installer for IBM products:
  - ✓ Remove the need to order a “base” product (z/OS, CICS, DB2, IMS, or WebSphere)
  - ✓ Make it possible for non-SMP/E products to be delivered in ServerPac
  - Get products off the “not separately available in ServerPac” list (in progress)
- Intended to let you order the product sets you want, when you want, for deployment into the environments you want



# z/OSMF Software Management (before)

- z/OSMF Software Management needed some work too...
- It required SMP/E packaging
  - Not all products were supported by Deployment
  - It would not create portable versions of software instances
  - It could not be the installer for non-SMP/E products from IBM and other software vendors
  - Deployments did not accept external packages as input

The screenshot displays the 'Add Software Instance' form in the z/OSMF Software Management interface. The breadcrumb trail is 'Software Management > Software Instances > Add Software Instance'. The form title is 'Add Software Instance'. On the left, a navigation pane shows a tree structure with 'System and Global Zone' selected. The main content area is titled 'System and Global Zone' and contains the instruction 'Select the system and the global zone CSI associated with the product set.' There are two required fields: '\* System:' with a dropdown menu showing 'C09' and a 'Select...' button; and '\* Global Zone CSI (Learn more.):' with a dropdown menu showing 'Select or type' and a red 'X' icon. The 'Global Zone CSI' field is highlighted with a red border, indicating a validation error.

# Newer Software Management Functions

## ✓ SMP/E-agnostic deployment

- Define Software Instances *with or without SMP/E zones*
- Deploy a Software Instance *whether or not* it has SMP/E zones

## ✓ A built-in, SMP/E-agnostic software packager

- Define and Export a Software Instance with arbitrary content in a portable format, whether SMP/E-managed or not SMP/E-managed

## ✓ A built-in portable format installer

- Perform a Deployment operation using an exported Software Instance as input, which gives us a built-in, SMP/E-agnostic installer

## ✓ Package (portable software instance) acquisition

- Get a portable software instance using GIMGTPKG

## ✓ This also provides a basis for a common installer, for anyone who wants to play along

- *Note: All are available on z/OS V2.2 with PTFs (some go back to V2.1)*

# Product ServerPac Outlook...\*

- There are 21 products left that are not separately available in ServerPac
- 8 are fonts; we added them to the Font collection element in z/OS V2.3 and will withdraw the separate font products\*
- ...leaving 13 to go.

Note: Shopz shows a higher number because it lists many products more than once

## Product ServerPac Eligibility

▲	Product is eligible for Product ServerPac
△	Product is not eligible for Product ServerPac

From Shopz Product legend page

- Goal is to have “all” products separately available in ServerPac by YE2019\*
- Why “2019”...? Hold that thought...

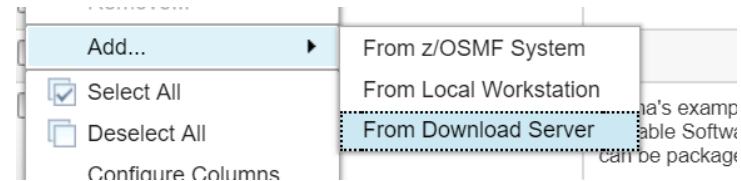
For 2016, Product ServerPac orders were ~37% of all ServerPac orders

# z/OSMF Software Management

- New in 2017 for z/OSMF Software Management
  - ✓ To better support non-SMP/E packaged products we added product information for them to Software Management, so we now have:
    - Product content displays for non-SMP/E products that are included in Software Instances
    - Support for end-of-service reporting for these products

- New in 2018:

- ✓ Download portable software instances



- 2018 Plans for z/OSMF Software Management\*

- Call workflows from deployment operations

The things above are (still) infrastructure in this timeframe...



\* All statements regarding IBM future direction and intent are subject to change or withdrawal without notice, and represent goals and objectives only.

# What's Left?

- Past 2018\*
  - z/OS V2.2 is the first release in which z/OSMF is a base element of z/OS, and **therefore z/OS V2.2 is the “base” for our strategy**
  - IBM can begin to transition to z/OSMF Software Management as the installer **once z/OS V2.2 is the lowest level driving system** for installing a new z/OS release
    - If we do what we usually do, that would not be before z/OS V2.4
    - That would follow z/OS V2.1's projected end of service in 3Q2018
- 2019+\*
  - SMP/E PTF installation and acquisition in Software Management
  - Software instance merge (including ZONEMERGE) in Software Management
  - Possibly SMP/E and Software Management support for software instance merge-with-replace
    - We'll wait to see whether we really need this



# Summarization at this point

- We have now or intend to have\*:
  - ✓ An **SMP/E-agnostic installer** built into z/OSMF Software Management
  - ✓ The **ability to merge products** into existing SMP/E zones
  - ✓ **Full content and end-of-service display support** for non-SMP/E-packaged products
  - ✓ **Package acquisition** function in z/OSMF Software Management
- The **ability to drive workflows** from the installer (which in turn can drive other workflows)
- **Software instance merge** (including ZONEMERGE) support in z/OSMF Software Management
- **SMP/E service installation** support in Software Management, as a result of a partnership with CA Technologies ©.
- “**Everything**” in **ServerPac**, whether SMP/E-packaged or not
- “**Everything**” available separately in **ServerPac**, too

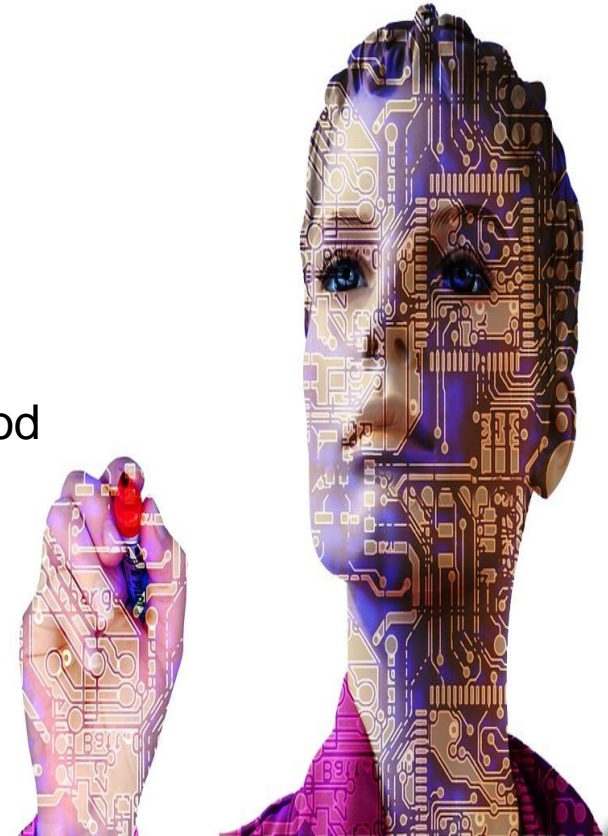
But there's more...



\* All statements regarding IBM future direction and intent are subject to change or withdrawal without notice, and represent goals and objectives only.

# ServerPac Transition Directions\*

- We want to convert existing generated jobs for product setup (aka “RIMs,” or Related Installation Materials”) **to** z/OSMF workflows
- We want to begin to create ServerPacs in z/OSMF Software Management Portable Software Instance format
  - To be determined: there might be a transition period during which both ServerPac formats will be available—but it will not be excessively long
- Sometime later, we want to withdraw the old (today’s existing) format
- The soonest we can realistically do this is early 2020



# Finally...

- It will be time to let go of CBPDO around this time\*
- When it was introduced in the 1980's it was a **big** step forward
  - CBPDO got everything in “one box” for the first time!
- Today, it's the “hard way” to manage system software, and it's had no significant investment in a long time





# What About Other Software Vendors?

# Cross-Vendor Meetings

- This z/OS Installation Strategy is an industry-wide effort.
- We have met in person at every SHARE in the USA since August 2015
- We have weekly meetings by phone
  - Hosted by BMC (thank you, Paul Spicer & Becky Parchman)
  - There are approx 32 companies on Paul's distribution list
  - Attendance has been quite good; from the 9 February 2018's web conference call:

Common Vendor Install project



(28 Participants)



# Some Other Points

# Our Intention\*

## We want to make the installation path simpler

- Use a modern browser-based installer, part of z/OS
- Use workflow infrastructure support for setup and configuration tasks
- One way to order and install across the IBM product set
- Same process supported for initial installation and deployments across your systems
- Support for all software: SMP/E and non-SMP/E
- Some accommodation for existing processes where possible
- Consistency with other vendors who choose to implement

This is where IBM wants to invest.



\* All statements regarding IBM future direction and intent are subject to change or withdrawal without notice, and represent goals and objectives only.

# The Future of SMP/E\*

## **We *absolutely do not* intend to discontinue the use of SMP/E for packaging IBM products!**

- If we ever wanted to, we would need something a lot like it
- Many IBM products require SMP/E packaging, such as those having:
  - Close component and product interdependencies
  - “Atomic level” (vs. file replacement) service capabilities
- But, some products do not need SMP/E; for example:
  - Those with very limited or no inter-product dependencies
  - Products whose service strategy is “replace all the code in the product in every PTF”
  - Products that use different service tools
- Expect to see more products from IBM in non-SMP/E format, and a few of them changed from SMP/E to non-SMP/E, when appropriate





# Final Thoughts

# IBM's View\*:

- The required set of function is currently intended for the z/OS V2.2 base via SPEs as it rolls out; **“nothing else to buy”**\*
- We will see how much we can actually get done.
- **We only win if you win**, too.
  - Vendors and customers, we really want everyone to play!
- Please **make sure we understand** your requirements...we will need your help to:
  - Make this “so easy, a caveman can do it”
  - Define things that should be common for a common look and feel
- We would also be **happy to have your help** with:
  - Prioritization and rollout
  - Discrete things we have not yet built, but need to build
  - Things we have not thought of yet

# Summary\*

- **GUI-based installer for ServerPac**
  - Part of z/OSMF Software Management
  - ServerPac will look markedly different
  - Support for SMP/E-packaged, non-SMP/E-packaged, and both kinds of products in the same package
- **ServerPac will be the way IBM products are delivered** on the platform
  - The installer will work and play well with z/OSMF workflows
- **z/OSMF Software Management:**
  - Will help with installing SMP/E-based service
- **All vendors can leverage these built-in functions** to play if they choose:
  - Software Management APIs
  - Export and Import capabilities in Software Management
  - Workflows
- **Other futures:**
  - Simplify HOLDDATA management
  - Incremental RESTORE
  - EAV support in Software Management
  - ...

# Functional Summary - Available!

What	When
Software Instance Create API (includes list, create, read, update, delete support)	<b>Available</b> (z/OSMF V2.1 with a PTF, quite a while back)
Improved ZONEMERGE	<b>Available</b> with PTF UO01809
<ul style="list-style-type: none"> <li>• Non-SMP/E Software Instances</li> <li>• Export a software instance</li> <li>• Use a portable format as input for Deployment</li> </ul>	<ul style="list-style-type: none"> <li>• <b>Available</b> <ul style="list-style-type: none"> <li>• On z/OS V2.2 with the PTF for PI66832</li> <li>• On z/OSMF V2.1 with the PTF for APAR PI67819</li> </ul> </li> </ul>
Common acquisition process for downloading SMP/E packaged PTFs	<b>Available 4Q16</b> , by publishing RECEIVE ORDER interface
Product and Feature information and end-of-service reporting for non-SMP/E products	<b>Available July 2017</b> on z/OS V2.2 and z/OSMF V2.1 with the PTF for APAR PI79666
Software Instance Export REST API	<b>Available February 2017</b> with the PTF for APAR PI72283

\* All statements regarding IBM future direction and intent are subject to change or withdrawal without notice, and represent goals and objectives only.

## Functional Summary, 2017-2018\*

What	When
ServerPac manufacturing support for non-SMP/E products	<b>Available</b>
Transfer of products from the standalone path to ServerPac	<b>Available November 2017</b>
Portable software instance acquisition (based on GIMGTPKG)	<b>Available February 2018</b> with the PTF for APAR PI80825
Deployment Workflows (software instance-level workflow)	<b>TBD; current plan is YE2018</b>
Data Set Attributes support (things such as LPA required, APF required, is an ISPF panel data set, etc.)	<b>TBD; current plan is YE2018</b>
Software Instance Merge (including, where applicable ZONEMERGE)	<b>TBD</b>

\* All statements regarding IBM future direction and intent are subject to change or withdrawal without notice, and represent goals and objectives only.

## Functional Summary, the Next Wave\*

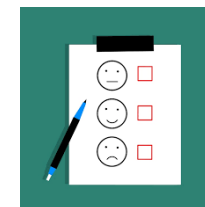
<b>What</b>	<b>When</b>
Vendor Information Files for vendor-specific data (vendor name, pertinent URLs, etc.)	Under evaluation now
Managing SMP/E-packaged PTFs	Under evaluation now

Note: Not listed in any particular order.

\* All statements regarding IBM future direction and intent are subject to change or withdrawal without notice, and represent goals and objectives only.

# We want your feedback!

- Please submit your feedback online at ....
  - <http://conferences.gse.org.uk/2018/feedback/BE>
- Paper feedback forms are also available from the Chair person
- This session is **BE**



# Trademarks

The following are trademarks of the International Business Machines Corporation in the United States and/or other countries.

CICS*	DFSMSHsm	FlashCopy*	IBM logo*	RACF*	WebSphere*	zEnterprise*
CICS Explorer	DFSMSrmm	GDPS*	Infoprint*	REXX	z10 BC	z Systems
DB2*	DFSORT	HiperSockets	Language Environment*	RMF	z10 EC	z/OS*
DFSMS	DS8000*	HyperSwap*	NetView*	System z9*	z13	
DFSMSsdfp	Easy Tier*	HyperWrite	Parallel Sysplex*	System z10	z13s	
DFSMSsdss	FICON*	IBM*	PrintWay*	Tivoli*	z/Architecture*	
		IBM Z				

\* Registered trademarks of IBM Corporation

The following are trademarks or registered trademarks of other companies.

Adobe, the Adobe logo, PostScript, and the PostScript logo are either registered trademarks or trademarks of Adobe Systems Incorporated in the United States, and/or other countries.

Cell Broadband Engine is a trademark of Sony Computer Entertainment, Inc. in the United States, other countries, or both and is used under license therefrom.

Intel, Intel logo, Intel Inside, Intel Inside logo, Intel Centrino, Intel Centrino logo, Celeron, Intel Xeon, Intel SpeedStep, Itanium, and Pentium are trademarks or registered trademarks of Intel Corporation or its subsidiaries in the United States and other countries.

IT Infrastructure Library is a registered trademark of the Central Computer and Telecommunications Agency which is now part of the Office of Government Commerce.

ITIL is a registered trademark, and a registered community trademark of the Office of Government Commerce, and is registered in the U.S. Patent and Trademark Office.

Java and all Java based trademarks and logos are trademarks or registered trademarks of Oracle and/or its affiliates.

Linear Tape-Open, LTO, the LTO Logo, Ultrium, and the Ultrium logo are trademarks of HP, IBM Corp. and Quantum in the U.S. and

Linux is a registered trademark of Linus Torvalds in the United States, other countries, or both.

Microsoft, Windows, Windows NT, and the Windows logo are trademarks of Microsoft Corporation in the United States, other countries, or both.

OpenStack is a trademark of OpenStack LLC. The OpenStack trademark policy is available on the [OpenStack website](#).

RSA and SecurID are registered trademarks of EMC Corporation in the United States and/or other countries.

TEALEAF is a registered trademark of Tealeaf, an IBM Company.

Windows Server and the Windows logo are trademarks of the Microsoft group of countries.

Worklight is a trademark or registered trademark of Worklight, an IBM Company.

UNIX is a registered trademark of The Open Group in the United States and other countries.

VISA is a registered trademark of Visa, Inc.

\* Other product and service names might be trademarks of IBM or other companies.

Notes:

Performance is in Internal Throughput Rate (ITR) ratio based on measurements and projections using standard IBM benchmarks in a controlled environment. The actual throughput that any user will experience will vary depending upon considerations such as the amount of multiprogramming in the user's job stream, the I/O configuration, the storage configuration, and the workload processed. Therefore, no assurance can be given that an individual user will achieve throughput improvements equivalent to the performance ratios stated here.

IBM hardware products are manufactured from new parts, or new and serviceable used parts. Regardless, our warranty terms apply.

All customer examples cited or described in this presentation are presented as illustrations of the manner in which some customers have used IBM products and the results they may have achieved. Actual environmental costs and performance characteristics will vary depending on individual customer configurations and conditions.

This publication was produced in the United States. IBM may not offer the products, services or features discussed in this document in other countries, and the information may be subject to change without notice. Consult your local IBM business contact for information on the product or services available in your area.

All statements regarding IBM's future direction and intent are subject to change or withdrawal without notice, and represent goals and objectives only.

Information about non-IBM products is obtained from the manufacturers of those products or their published announcements. IBM has not tested those products and cannot confirm the performance, compatibility, or any other claims related to non-IBM products. Questions on the capabilities of non-IBM products should be addressed to the suppliers of those products.

Prices subject to change without notice. Contact your IBM representative or Business Partner for the most current pricing in your geography.

This information provides only general descriptions of the types and portions of workloads that are eligible for execution on Specialty Engines (e.g. zIIPs, zAAPs, and IFLs) ("SEs"). IBM authorizes customers to use IBM SE only to execute the processing of Eligible Workloads of specific Programs expressly authorized by IBM as specified in the "Authorized Use Table for IBM Machines" provided at [www.ibm.com/systems/support/machine\\_warranties/machine\\_code/aut.html](http://www.ibm.com/systems/support/machine_warranties/machine_code/aut.html) ("AUT"). No other workload processing is authorized for execution on an SE. IBM offers SE at a lower price than General Processors/Central Processors because customers are authorized to use SEs only to process certain types and/or amounts of workloads as specified by IBM in the AUT.





